



## Micro Energy Storage **Release Notes**

---

MS-A2/HiBattery 1920 AC

Issue Date: 09.01.2026

# Contents

<b>1 Overview .....</b>	<b>3</b>
<b>2 Firmware and Software Versions Included in This Release.....</b>	<b>3</b>
<b>3 What's New.....</b>	<b>3</b>
3.1 Hybrid System Compatibility Expansion .....	3
3.2 Emergency Power Supply (EPS) Function .....	4
3.3 Support for Hoymiles P1 Meter and HMeter-T120-RW .....	5
3.4 MQTT Configuration Support for HiBattery AC .....	6
3.5 Other Improvements .....	7

# 1 Overview

This release introduces new capabilities and visual enhancements for the HiBattery 1920 AC and MS-A2. These improvements enhance scalability, usability, and monitoring experience for home energy users.

## 2 Firmware and Software Versions Included in This Release

Item	HiBattery 1920 AC	MS-A2-FX
Communication Module	V01.02.02	V01.06.02
Inverter	V01.02.02	V01.06.03
BMS	V01.00.02.03	V1.13.0
LED	V00.00.06	—

Related Product	S-Miles Home App
Recommended Version	V2.7.0
Compatibility	This and later versions

## 3 What’s New

### 3.1 Hybrid System Compatibility Expansion

You can now combine MS-A2 and HiBattery 1920 AC in the same system. But,

- A single system supports up to 6 devices in total (any combination of MS-A2 and HiBattery AC).
- All devices must be upgraded to the latest firmware before being added to the same system.

For system limits or behavior of earlier versions, refer to previous release notes.



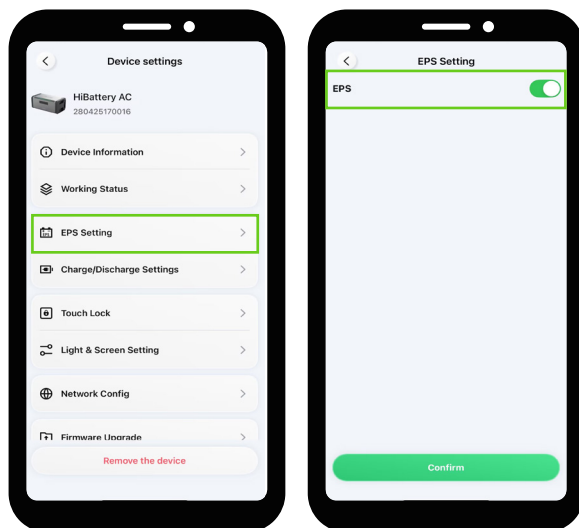
## 3.2 Emergency Power Supply (EPS) Function

The EPS function is now supported on both MS-A2 and HiBattery 1920 AC. When EPS is enabled, the system automatically switches to off-grid mode during a grid outage and supplies power to the backup load.

### How to Enable EPS in the S-Miles Home App

Step 1: Enable EPS in the device settings.

Step 2: Connect the backup load to the device's off-grid (EPS) port.



Step 1

Step 2

### 3.3 Support for Hoymiles P1 Meter and HMeter-T120-RW

You can now add and monitor a Hoymiles P1 Meter/HMeter-T120-RW in your system.

P1 meter is shown as an example. The procedure is the same for HMeter-T120-RW.

#### How to Add a P1 Meter in the S-Miles Home App

Step 1: Tap **Link Smart Device**.

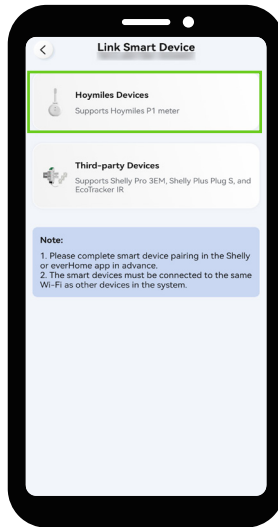
Step 2: Select Hoymiles Devices.

Step 3: Scan and select the Hoymiles P1 Meter.

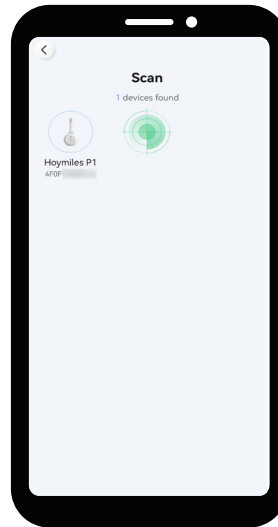
Step 4: Follow the on-screen instructions to configure the network.



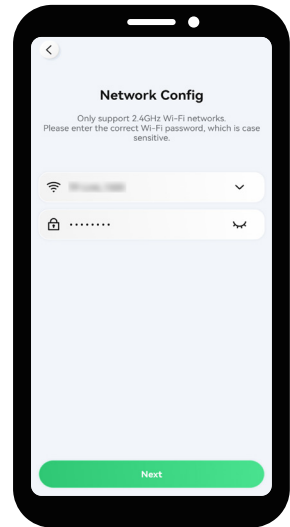
Step 1



Step 2



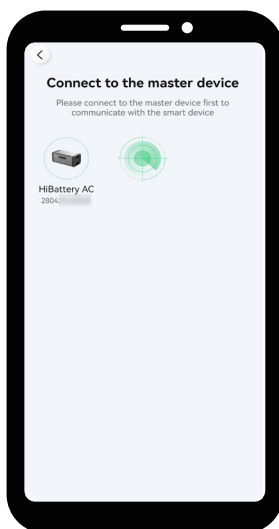
Step 3



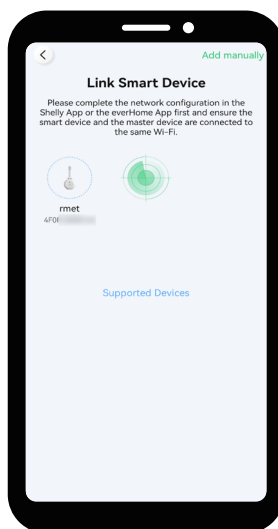
Step 4

Step 5: Select the master device to which the P1 Meter will connect.

Step 6: Select Hoymiles P1 Meter to connect to the master device and confirm the connection.



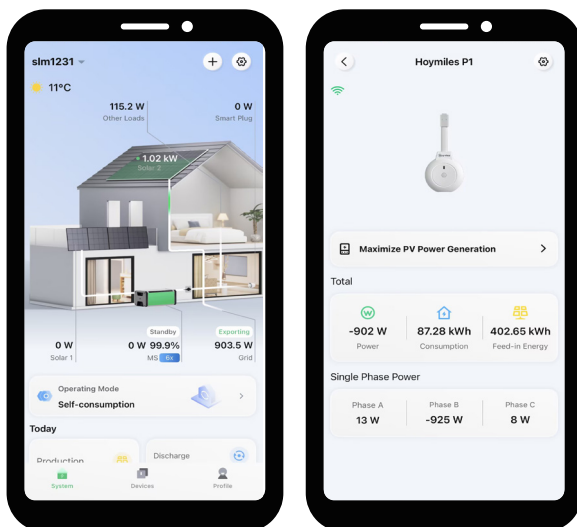
Step 5



Step 6

### View Meter Data

Grid power data measured by the P1 Meter/HMeter-T120-RW is displayed as Grid data on the system homepage. Detailed P1 meter information is available under **Device List > Hoymiles P1 Meter/HMeter-T120-RW**.

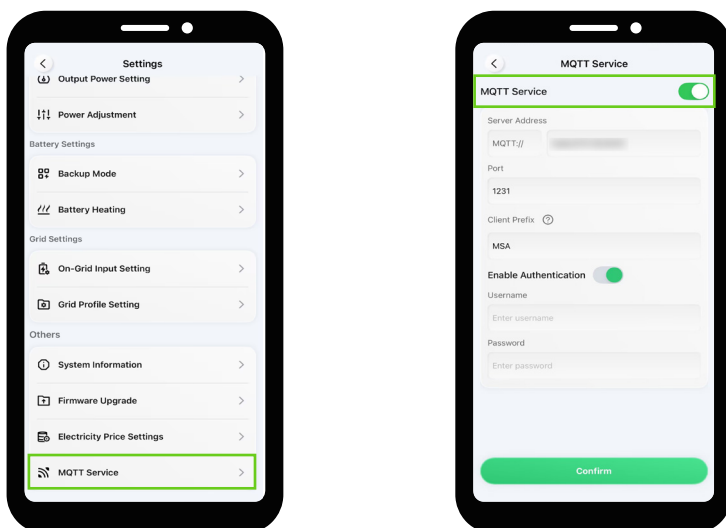


## 3.4 MQTT Configuration Support for HiBattery AC

HiBattery 1920 AC now supports MQTT configuration, enabling integration with third-party platforms for:

- Data acquisition
- Power monitoring
- Power control

This allows more flexible system integration and advanced energy management.



### 3.5 Other Improvements

- Optimized AI algorithms in Time-of-Use (TOU) mode
- Improved visual design of energy flow diagrams on the system page
- Support for adding the S-Miles Home widget to the phone home screen to display key system parameters

