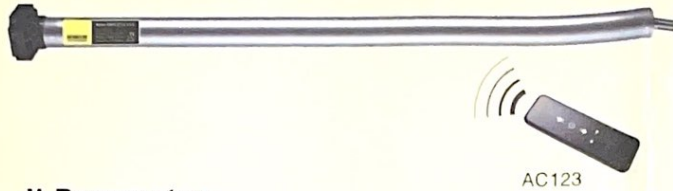


AM15 Built-in Battery Motor User Manual



I. Key Features

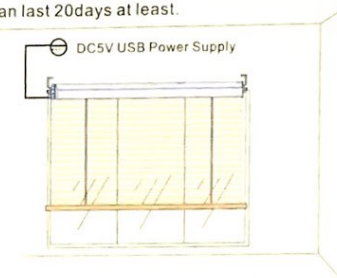
- Energy-saving design with patent, built-in 800mAh lithium battery, DC5V USB rechargeable port
- Self-correcting function, it can correct the deviation of the stroke
- Easy to switch running directions and dot-move/continuous move by emitter
- 6 limit positions for options
- Short-circuit and open-circuit protection design
- Low-battery alarm, motor will beep/second when low power, then switch continuous move to dot move

II. Parameters

Model No.	Rated Torque	Rated Speed	Rated Current	Rated Voltage	Working Temperature	Frequency
AM15-0.3/35-ES-E	0.3N.m	35rpm	≤100mA	DC5V	-10°C~+60°C	433.92MHz

III. Applications

Built-in battery power, rechargeable by DC5V power supply, 3-5mins/day working time, battery can last 20days at least.

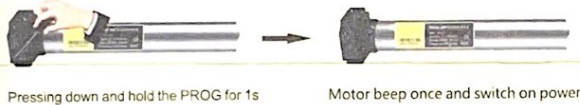


IV. Operation

1. Power ON/OFF function

* After switching off power, the motor wouldn't able to receive remote signals.

Switch Power ON



Motor beep once and switch on power

Switch Power OFF



Motor long beep 1s and switch power off

2. Programming



Motor jog once



Motor jog once and the program finished

3. Change direction

* In case of the working direction was upside down, then follows below step, otherwise, please skips to limit setting step.



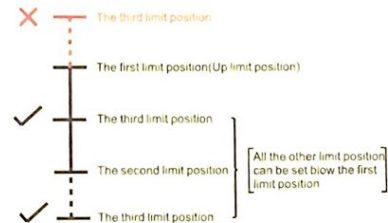
Motor jog once



Motor jog once and the direction changed

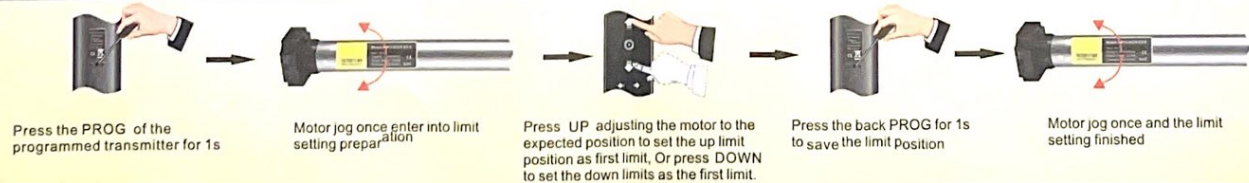
4. Limit position setting

- Maximum six different limit positions can be set, the furthest two positions called the UP and DOWN limit position, others called the middle limit positions;
- When the first limit position is the UP limit position (as right illustration), all other limit positions can only be set below this position; the same thing, when the first limit position is the DOWN limit position, all other limit positions can only be set above this position;
- Every limit position can be fine-tuned or deleted separately (The first limit position can only be fine-tuned but can't be deleted separately. It can be deleted when delete all memories);
- The motor stops at the next limit position after accepting once UP/DOWN order. When it reaches the UP limit position, the UP order is no use any more; when it reaches the DOWN limit position, the DOWN order is no use;
- Press the UP/DOWN button twice on the transmitter at the speed of once a second, motor will go directly to the UP/DOWN limit position without any stop at the middle limit



5. First limit position setting

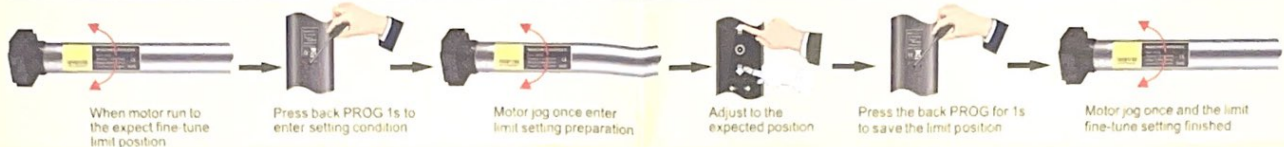
(If there's no any action within 30's, the motor will exit from limit position preparation automatically)



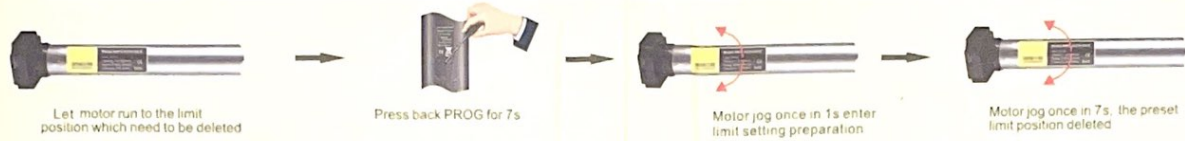
6. Other limit position setting * (If there's no any action within 30 s , the motor will exit from limit position preparation automatically)



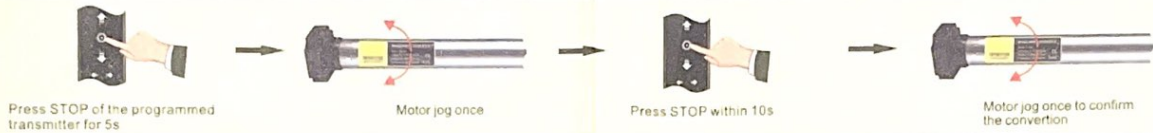
7. Limit position fine-tuning * (If there's no any action within 30 s , the motor will exit from limit position preparation automatically)



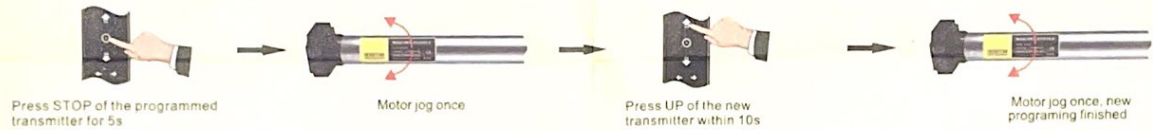
8. Delete the limit position * (The first limit position can't be deleted)



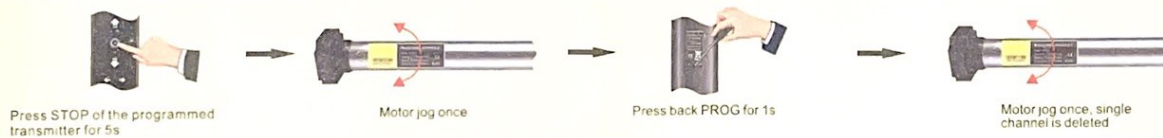
9. Dot move and continuous move conversion * The acquiesce mode is dot move (if short press is less than 1s), otherwise, motor will move continuously. * After limits setting done, short press is continuous move



10. Add the new transmitter

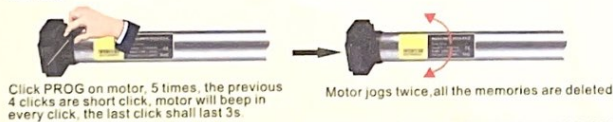


11. Delete single channel memory



12. Delete all the memories

Method 1



Method 2



V. Trouble Shooting

Items	Problem	Matter	Shooting
1	Motor does not run, or run slowly	a. Over-load protection b. Non-proper installation	a. Exchange with proper motor b. Check if proper installed
2	Motor does not run, or run slowly	a. Motor reaches the limit b. Out of battery	a. Normal situation b. Recharge the battery